



# RX Troughs

Durable, long life trough solutions  
for storing and supplying stock water



*an OAliaxis company*

RX PLASTICS LTD  
PO Box 360 Ashburton  
Phone +64 3 307 9081  
Email [sales@rxplastics.co.nz](mailto:sales@rxplastics.co.nz)  
[www.rxplastics.co.nz](http://www.rxplastics.co.nz)



# Super Trough range



Whether you are storing, transporting or distributing water or wastewater RX Plastics has the solution for you, with manufacturing facilities New Zealand wide and selections of strong supporting brands RX Plastics can assist whatever your requirements.

## Features

- Made from strong virgin PE material.
- Super sized ribs in walls for maximum strength
- Super strong rolled rims for added stability
- Corrugations in floor for strength
- Easy access to ballcock under lid in an enclosed cavity
- Hidden lead in pipe to ballcock
- Light weight means easy to handle
- A range of sizes to suit all situations
- Use with RX 150mm ballfloats
- New Zealand manufactured

## We've got what you need

RX Plastics has a wide range of products to support your purchase of our float valve range:



**Polyethylene Pipe (Polypipe) and PVC Pipe** – RX has a range from 15mm - 450mm to suit many requirements. Pipe is rated 5bar (72psi) - 25bar (375psi).

### BSP Threaded Fittings

RX has a range of Threaded fittings from ½" (15mm) to 4" (100mm) BSP or BSPT for your connections.



### Tanks

RX has tanks from 135L - 675L (Header Tanks) and 500L - 33,000L (standard tanks).

## Application

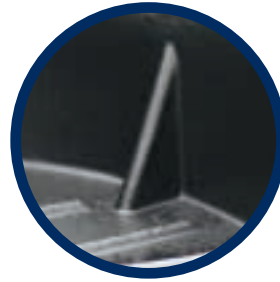
The RX Plastics Super Trough Range is constructed from strong virgin PE material. Manufactured for the harshest conditions and abuses. Durable long life trough choice for storing and supplying stock water.

Ideal water troughs for cows, calves, sheep, goats and horses



### Super strong rim

Rolled rims give extra strength and stability. Chamfered edges minimise damage from stock rubbing which prevents trough damage.



### Super sized ribs

Super sized ribs in side walls and corrugations in floor for maximum strength.



### Lid in place

Lid protects against damage to ballcock and float. If ballcock needs maintenance simply undo a single stainless steel bolt and remove trough cover completely for full access.



### Hidden lead-in pipe

RX Plastics troughs provide protection on the lead-in pipe to the ballcock and is protected from rubbing by stock.



### RX's full flow ballcock and float

RX Plastics use specially manufactured full flow ballcocks with 150mm ballfloats to ensure that the flow is kept up for thirsty animals on a hot day.

## Super Trough range

RX Plastics Super Troughs come **standard** with a 20mm long threaded full flow (RXPTVL20SA) float valve complete with backnut, 150mm ballfloat and 200 litre troughs upwards also have a 40mm long bung. This full flow valve is rated to a maximum of 80psi - 160lpm.

Can be easily moved for use when break feeding. Ideal around stock yards and lanes

## Round troughs



**RXTR200LRDB 200 litre trough - black**  
(1180mm x 390mm deep)

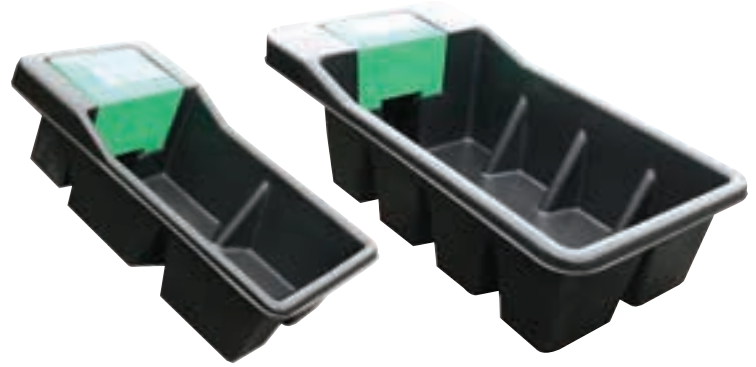


**RXTR500LRDB 500 litre trough - black**  
(1620mm x 420mm deep)



**RXTR1200LRB 1200 litre trough - black**  
(2130mm x 580mm deep)

## Rectangular troughs



**RXTR100LRTB 100 litre trough - black**  
(1160mm x 620mm x 300mm deep)

**RXTR300LRTB 300 litre trough - black**  
(1620mm x 880mm x 410mm deep)

## Between the fence trough

- Designed to service two paddocks of stock
- Each side holds 175 litres of water
- For ease of access the ballcock cover is off to one side of fence
- Ideal for sheep and lambs due to low sides



**RXTR350LRTB 300 litre trough - black**  
(1935mm x 1100mm x 380mm deep)

## Spare parts



### Super trough - trough kits

Made up of RXPTV20LSA, RXHP40 and RXTKBW (bolt and washer)

**RXTCG**  
- Trough cover



# Super Trough range

## Fence hung troughs

- Comes complete with 20mm full flow ballcock and float
- Fully moulded body that protects the ballcock
- Strong stainless steel arms that are adjustable
- Threaded bung in base for easy cleaning



**RXTR12L 12 litre fence hung trough - black**  
(385mm (l) x 340mm (w) x 320mm (h))

**RXTR25L 25 litre fence hung trough - black**  
(500mm (l) x 375mm (w) x 400mm (h))

## Porta troughs

- Easy to roll cylindrical trough body
- Recessed pockets to protect pipe fittings from stock
- Quick and easy assembly/disassembly



**RXTR180L.COMP 180 litre porta trough - black**

850mm (w) x 550mm (h)

Comes complete with:-

50 metres of 20mm Low Density Pipe

150mm ballfloat

RXPTV20LSA

RXTC32, LDFC20, TV.CN,

RXTTIBN20, RXTTIW20, RXTTI32

**RXTR180L 180 litre porta trough - black**

Sold without pipe

## Standard rectangular troughs

- Rolled rim for added strength
- Dual purpose - can be used for stock water or feed
- Made from black polyethylene



**RXTR45LRTB 45 litre rectangular trough - black**  
(600mm x 400mm x 250mm)

**RXTR115LRTB 115 litre rectangular trough - black**  
(1240mm x 450mm x 300mm)

## Standard round troughs

- Comes in black and mist green
- Ideal use for outdoor fish ponds
- 20mm brass socket moulded in



*Also available in mist green.*

**RXTR450LRDB 450 litre round - black**  
(1380mm x 430mm deep)

**RXTR450LRDB 450 litre round - green**  
(1380mm x 430mm deep)