



RX Metro Tanks

using water effectively



an *Aliaxis* company

RX PLASTICS LTD
PO Box 360 Ashburton
Phone +64 3 307 9081
Email sales@rxplastics.co.nz
www.rxplastics.co.nz



RX PLASTICS

Metro tanks



Application

For the use of water storage in an urban setting. This family of tanks are available as a slim line Single Tank, Double Tank or a Triple Modular Configuration.

Features

- Easy to manoeuvre and install
- Slim line (space saving)
- Maximum use of volume
- Popular choices of colour to compliment your house
- Manufactured from high quality food grade virgin polyethylene
- One piece construction, UV stabilised
- New Zealand manufactured
- 10 year warranty



We've got what you need

RX Plastics has a wide range of products to support your purchase of threaded fittings:

BSP Threaded Fittings – RX has a range of Threaded fittings from ½" (15mm) to 4" (100mm) BSP or BSPT for your connections.

Tanks – RX has tanks from 135L – 675L (Header Tanks) and 500L – 33,000L (standard tanks).

Polyethylene Pipe (Polypipe) and PVC Pipe – RX has a range from 15mm – 450mm to suit many requirements. Pipe is rated 5bar (72 psi) – 25bar (375psi).



Examples of Water Consumption

This is the approximate use of water through different applications. Use will vary between different brands and types so consult with your appliance retailer for your particular product.

Shower @ 6 litres per minute by 5 minutes	30 litres
Shower @ 18 litres per minute by 5 minutes	90 litres
Bath uses approximately	200 litres
Washing machine top loader approx. – full load	210 litres
Dishwasher – on economy cycle approx.	28 litres
Toilet use – 12 full flushes per day	132 litres
Toilet use – 4 full flushes per day	92 litres
Garden hose – soft hand held approx.	900 litres/hr
Garden hose – sprinkler approx.	1300 litres/hr
Garden hose – uncontrolled approx.	2000 litres/hr
Kitchen sink – filled approx. 100mm	12 litres

How much do we use?

ACTIVITY	WATER USE
Cleaning teeth	0.2 – 5 litres
Shower (low flow)	30 - 60 litres / 5 minutes
Bath (full)	100 – 300 litres
Toilet (full flush)	up to 11 litres
Toilet (half flush)	up to 6 litres
Garden hose (on full)	200 litres / 5 minutes
Dishwasher (single wash)	28 – 40 litres
Washing machine (top load – full load)	200 litres or more
Washing machine (front load – full load)	30 – 50 litres or more
Dripping tap	2 drips / second = 380 litres / month

Single (1670 Litres) and Double Tank (3340 Litres)

1670 litre
Standard Metro Tank



3340 litre
Double Metro Tank



Modular System

5010 litre
Corner Configuration
Metro Tanks



5010 litre
Linear
Configuration
Metro Tanks



- Compact footprint requires smaller pad area
- Designed to maximise under eaves installation
- Slim design to maximise fence line installation
- Manhole access for ease of maintenance
- Threaded watertight lid with vent
- Compatible with a wide range of pump systems
- Compatible with rain harvesting systems and kits
- Two vertical downpipe points up to 90mm on top of tank
- Overflow points up to 90mm on both sides and back of tank
- Four outlet points up to 70mm (front 20mm as standard)
- Bracing points at rear for secure fixing to walls
- High strength cylindrical design
- High quality food grade and UV resistant materials
- Tank kit supplied with every tank
 - 15mm brass tap
 - 15mm tank inlet
 - 2 x 100mm wall bracket
 - Note: when installing a Metro Tank make sure each Tank is fixed to the wall using brackets which have been supplied in the Tank Kit
- 10 Year warranty

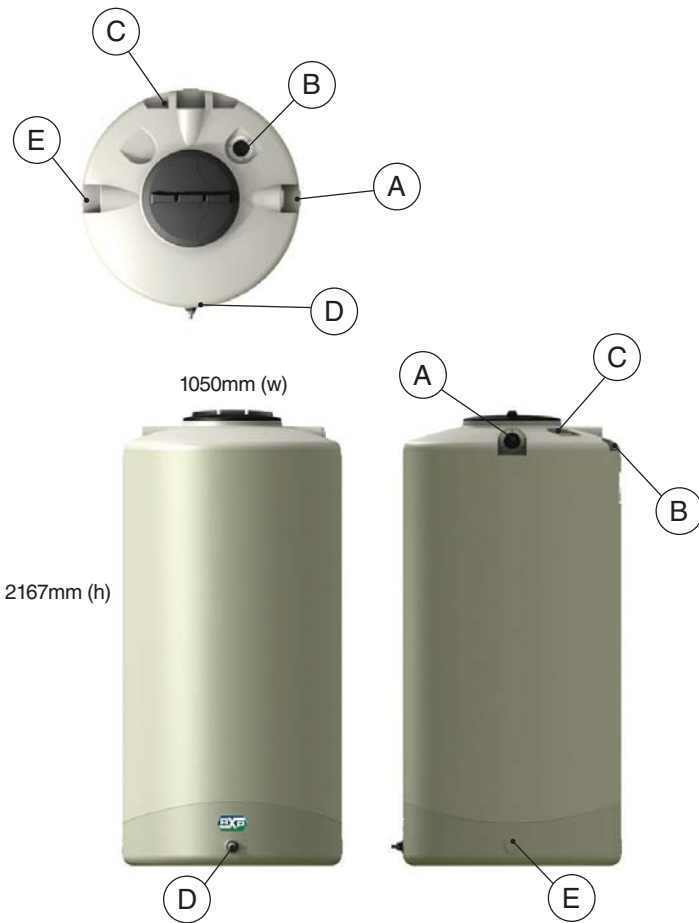


- 3 units (5010 litres) rather than a single unit
- Linear or corner configuration
- Standard 25mm connections supplied or up to 70mm
- Quick and simple installation
- Connect extra tanks to achieve any required volume
- Connected tanks work together to fill and unfill at the same time
- To join the modular system a separate joining assembly kit is required. (RX1670.JA sold separately)
 - 25mm PVC joiner
 - 2 x 25mm uniseals
 - 44mm hole saw

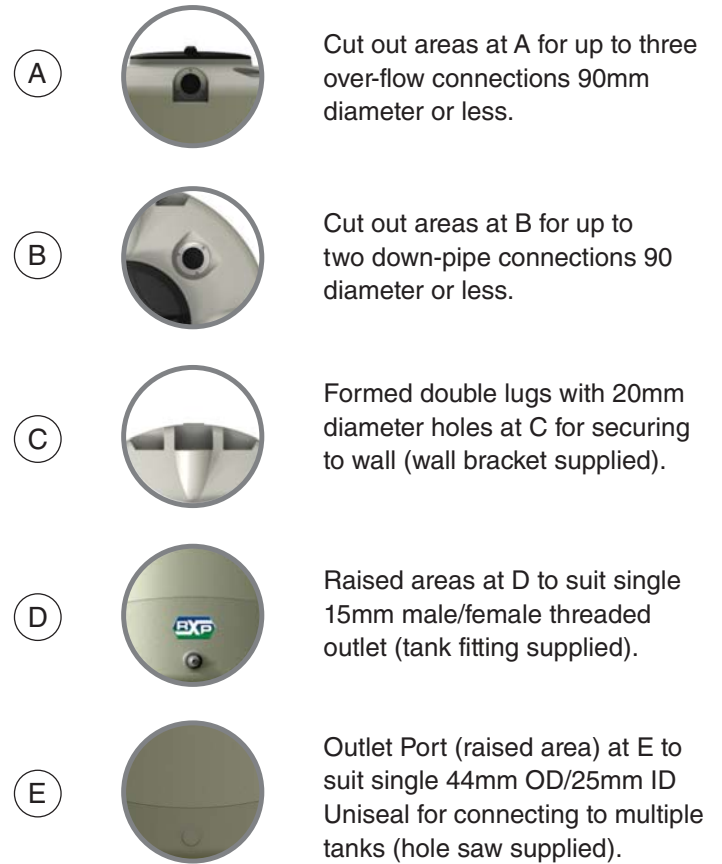


- Overflow
The overflow pipe needs to be fitted to one of the top two panels. Water from the overflow should be dispersed away from the foundation of the tank to prevent erosion.

Rain Harvesting Tank Features



Standard Components



Metro Tank Assembly (multiple tanks) Guideline to fitting the Uniseal and PVC Joiner

The Tank site must be level and free from any protruding objects which may cause damage to the Tank.

TANK 1

Using a 44mm hole saw and a suitable power (battery) drill, cut a hole in the appropriate Outlet Port (raised area) you have selected, located at the base of the tank.

Fit the Black Uniseal into the hole; lubricate the inside of the Uniseal with the plumbers gel.

Introduce the 25mm PVC joiner into the Uniseal and push in until the socket on the PVC Joiner is located hard up against the Uniseal.

This process can be repeated to allow several tanks to be installed together.

TANK 2

On the next tank cut hole in the Outlet Port (raised area) located at the base of the tank.

Fit Uniseal, lubricate the inside.

Line up the Uniseal on Tank 2. With the already fitted PVC Joiner on Tank 1, then firmly push Tank 2 onto the Joiner until the Uniseal is located hard up against the PVC socket.

