



# K-Line<sup>TM</sup> for Landscape

Quick and easy for important areas...



an *OAliaxis* company

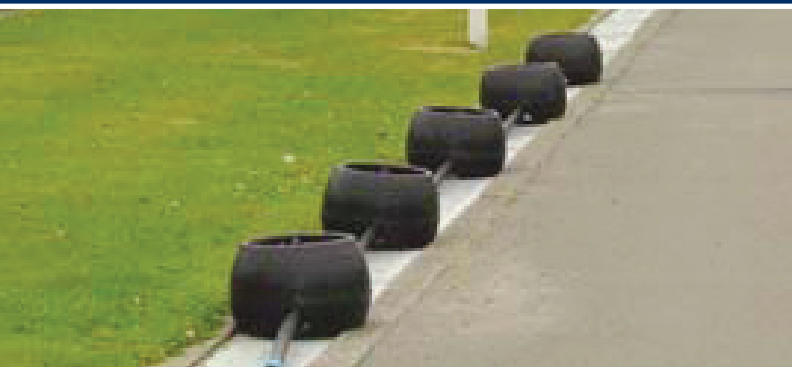
RX PLASTICS LTD  
PO Box 360 Ashburton  
Phone +64 3 307 9081  
Email [sales@rxplastics.co.nz](mailto:sales@rxplastics.co.nz)  
[www.rxplastics.co.nz](http://www.rxplastics.co.nz)



**RX PLASTICS**



# K-Line™ Landscape



Whether you are storing, transporting or distributing water or wastewater RX Plastics has the solution for you, with manufacturing facilities New Zealand wide and selections of strong supporting brands RX Plastics can assist whatever your requirements.

## We've got what you need

**RX Plastics has a wide range of products to support your water and wastewater distribution.**

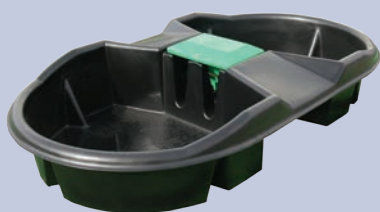


### Tanks

RX has tanks from 135 litres - 33,000 litres. Whatever your requirements, RX has it.

### Farm Troughs

RX has troughs from 12 litres - 1,200 litres to suit your animals water requirements.



### Polyethylene Pipe (Polypipe) and PVC Pipe

RX has a range from 15mm – 450mm to suit many tanks. Pipe is rated 5bar (72 psi) – 25bar (375psi).

## What is K-Line™?

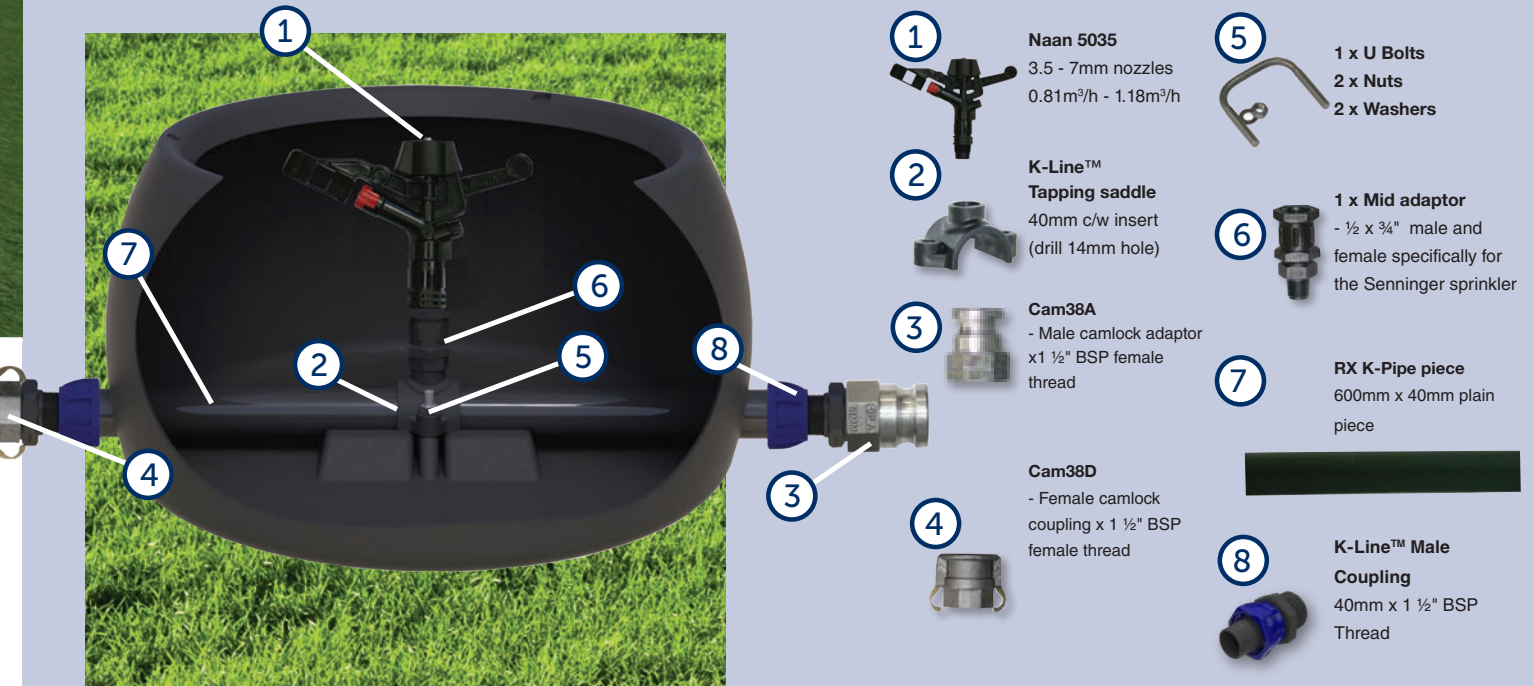
- K-Line™ is a flexible hose line sprinkler system designed for irrigation. At the heart of the system is a series of tough plastic pods protecting a sprinkler, firmly attached to special K-Pipe™ polyethylene pipe
- K-Line™ provides an excellent range of irrigation options from the many and varied sources
- K-Line™ systems are all designed to operate at low pressure
- K-Line™ provide a number of product choices which gives you maximum flexibility in a customised irrigation system for your farm
- K-Line™ will suit any field shape, size or terrain
- K-Line™ is easily moved by any quad-bike or farm vehicle
- K-Line™ is a low application rate system



## Benefits

- Low capital cost
- Ease of installation use and shifting
- Tailor application to staff availability
- Low application rate to maximise soil/plant uptake and to remove the risk of ponding and run-off
- Control of application with automated timers
- With camlocks, simple and easy layout, simple and easy to relocate to other sites
- Can be connected with layflat or K-Pipe™ polyethylene tubing between pods

# K-Line™ Landscape Mid components



## Sprinkler

- The ¾" full-circle sprinklers distribute over a 25m diameter
- High uniformity for large nozzles up to 16 x 24m @ 88% cu
- Sprinklers can achieve application rates down to as low as 2mm per hour. This reduces the risk of ponding and run-off and the soil has time to absorb all the water
- Outlasts and costs less than brass or aluminium sprinklers
- Built for strength and durability using high-impact engineering-grade thermoplastics and top quality stainless steel components
- Pressure range between 1.5 bar and 3 bar (20 – 45 PSI)
- Standard lower bearing pipe thread: ¾" male thread
- 27° angle for maximum distance of throw
- Single nozzle design minimizes clogging

## Sprinkler Operation

- Sprinklers have a range of nozzles 3.5 – 7.0mm in size
- Complete flow rates: 0.93 –v 2.7 m³/hr

## System components

- The K-Line™ Mid pod comes complete with the sprinkler, riser assembly, saddle and through pipe c/w camlocks
- K-Line™ provides a complete series of K-Pipe™ solutions
- To ease shifting K-Line™ also provides end tow units

## Spacing and Pipe System

- Special 32, 40, 45mm K-Pipe™ is available to complete your new K-Line™ Mid landscape pods. The K-Pipe™ with camlock couplings fitted can be used for quick and easy shifting from site to site
- Alternatively lay flat hose can be used to supply the pods

# K-Line™ Landscape Max components



- |   |  |
|---|--|
| <p><b>1</b></p> <p><b>RX PP Riser</b><br/>for 800mm x 50mm<br/>thread, both ends</p>              | <p><b>5</b></p> <p><b>3 x U Bolts</b><br/><b>6 x Nuts</b><br/><b>6 x Washers</b><br/><b>4 x Spacers</b></p>   |
| <p><b>2</b></p> <p><b>Cam51A</b><br/>- Male camlock<br/>adaptor x 2" BSP<br/>female thread</p>     | <p><b>6</b></p> <p><b>7025 S Senninger</b><br/>5.56 - 9.53mm nozzles<br/>2m³/h - 6m³/h</p>    |
| <p><b>3</b></p> <p><b>Plassim</b><br/>63mm x 25mm<br/>with insert top</p>                          | <p>or</p> <p><b>8025 S Senninger</b><br/>9.53 - 15.88mm nozzles<br/>6m³/h - 20m³/h</p>    |
| <p><b>4</b></p> <p><b>Cam51D</b><br/>- Female camlock<br/>coupling x 2" BSP<br/>female thread</p>  | <p><b>7</b></p> <p><b>1 x RXHS 25</b><br/>RX Hex socket 25mm</p> <p><b>1 x RXPPR 25</b><br/>RX Poly Riser 25mm</p>    |
|   | <p>or</p> <p><b>1 x RXHS 32</b><br/>RX Hex socket 32mm</p> <p><b>1 x RXRB 32 x 25</b><br/>RX Hex Reducing Bush<br/>32mm x 25mm</p> <p><b>1 x RXPPR 25</b><br/>RX Poly Riser 25mm</p>  |



## Sprinkler

- The 70 and 80 series full-circle sprinklers distribute water over a large diameter, for higher volume systems
- Senninger sprinklers can achieve application rates down to as low as 3mm per hour
- Outlasts and costs less than brass or aluminium sprinklers
- Built for strength and durability using high-impact engineering-grade thermoplastics and top quality stainless steel components
- Built-in hex wrench for easy in-the-field maintenance standard lower bearing pipe thread:
  - Senninger 8025 – 1 1/4" male thread
  - Senninger 7025 – 1" male thread
- 25° angle for maximum distance of throw
- Single nozzle design minimizes clogging

## Sprinkler Operation

- Senninger sprinklers have a range of nozzles from 5.56 to 15.88mm in size (7025 – 8025 inclusive)

- Complete flow rates: 2 – 20 m³/hr
- Precipitation rates from 3mm to 20mm per hour

## System components

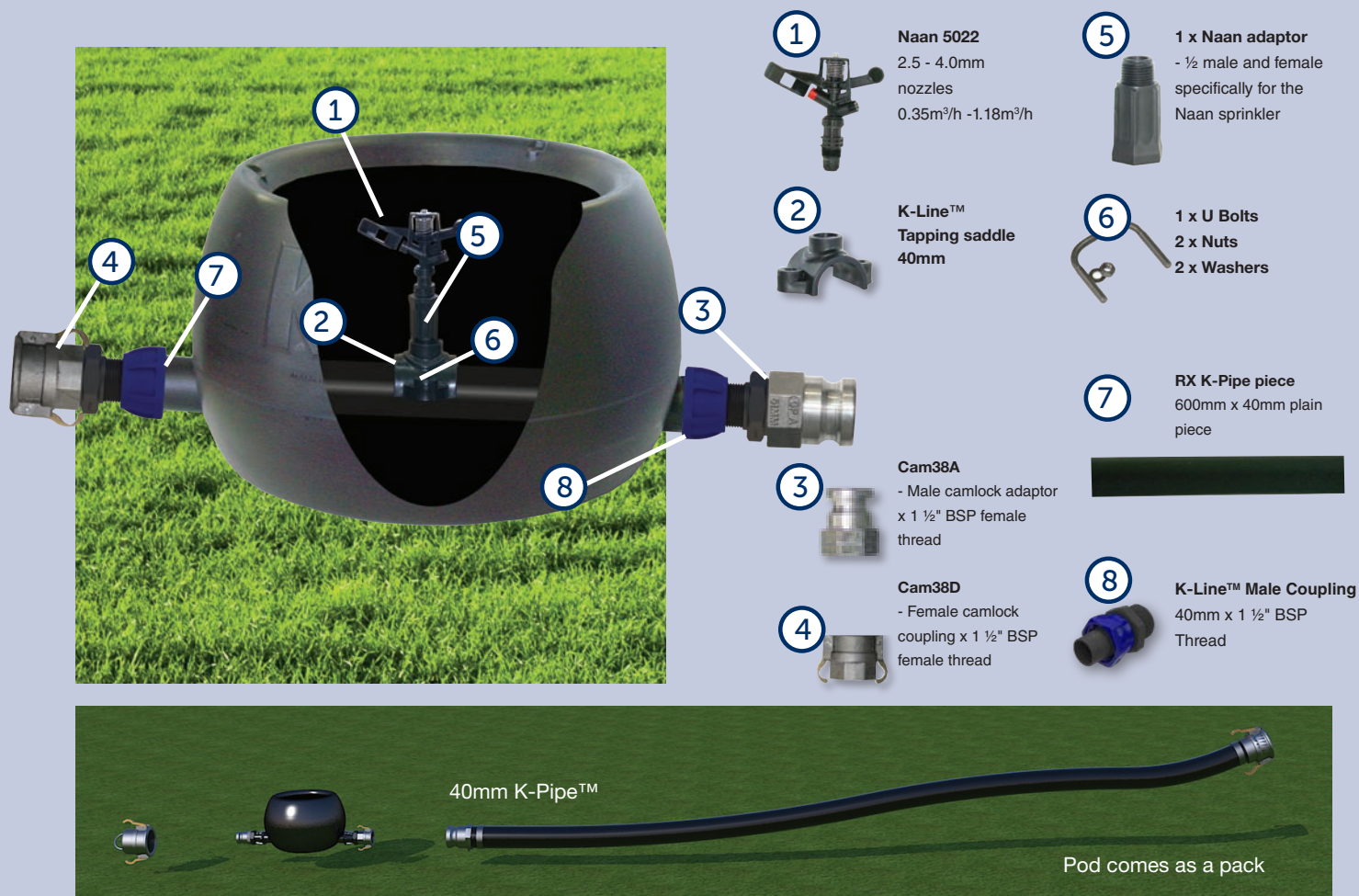
- The K-Line™ Max<sup>80</sup> and Max<sup>70</sup> pod comes complete with 51mm female and male camlocks
- K-Line™ provides a 63mm K-Pipe™ x 40 metres that is M&F (male and female) camlocked (51mm connectors)
- With this combination it means that the lines can be connected in any order to the pods
- To ease shifting K-Line™ also provides end tow units, 51mm camlocked

## Spacing and Pipe System

- Special 63mm K-Pipe™ tubing complete with M&F (male and female) camlocks come pre-fabricated so as to be able to instantly connect to your new K-Line™ Max<sup>80</sup> pods
- The special K-Pipe™ is designed to be flexible but highly resilient to the shifting process
- Alternatively lay flat hose can be used to supply the pods



# K-Line™ Std Landscape Components



## Sprinkler

- ½" full-circle sprinklers distribute over a 20m diameter
- Sprinklers can achieve application rates down to as low as 2mm per hour. This reduces the risk of ponding and run-off and the soil has time to absorb all the water
- Outlasts and costs less than brass or aluminium sprinklers
- Built for strength and durability using high-impact engineering-grade thermoplastics and top quality stainless steel components
- Pressure range between 2 bar and 4 bar (28 – 60 PSI)
- Standard lower bearing pipe thread: ½" male thread
- Quick release bayonet nozzles for fast interchange
- Single nozzle design minimizes clogging

## Sprinkler Operation

- Sprinklers have a range of nozzles down to 2.5mm in size
- Complete flow rates: 0.35 - 1.18 m³/hr

- Precipitation rates from 2mm to 10mm per hour
- High uniformity for large nozzles up to 12 x 18m @ 86% cu

## System components

- The K-Line™ Std pod comes complete with the sprinkler, riser assembly, saddle and through pipe c/w camlocks
- K-Line™ provides a complete series of K-Pipe™ solutions
- To ease shifting K-Line™ also provides end tow units

## Spacing and Pipe System

- Special 32, 40, 45mm K-Pipe™ is available to complete your new K-Line™ Std landscape pods. The K-Pipe™ with camlock couplings fitted for quick and easy shifting from site to site can be used
- Alternatively lay flat hose can be used to supply the pods



For more information or to request a brochure on our other products and services, freephone 0800 288 558 or visit our website: [www.rxplastics.co.nz](http://www.rxplastics.co.nz)

RX PLASTICS LTD  
PO Box 360 Ashburton  
Phone +64 3 307 9081  
Email [sales@rxplastics.co.nz](mailto:sales@rxplastics.co.nz)  
[www.rxplastics.co.nz](http://www.rxplastics.co.nz)

22 NOVEMBER 2012



**RX PLASTICS**

an *OAliaxis* company